

Heavy Duty Trash Pumps



Solid Sizes

Max. 20mm
50X Type

Max. 27mm
80X & 100X Type

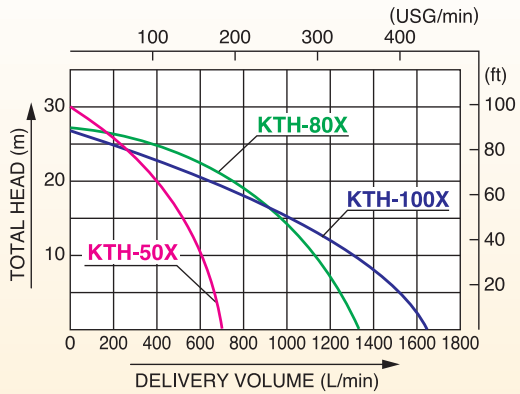


KTH-80X



KTH-100X

■ Performance Curve



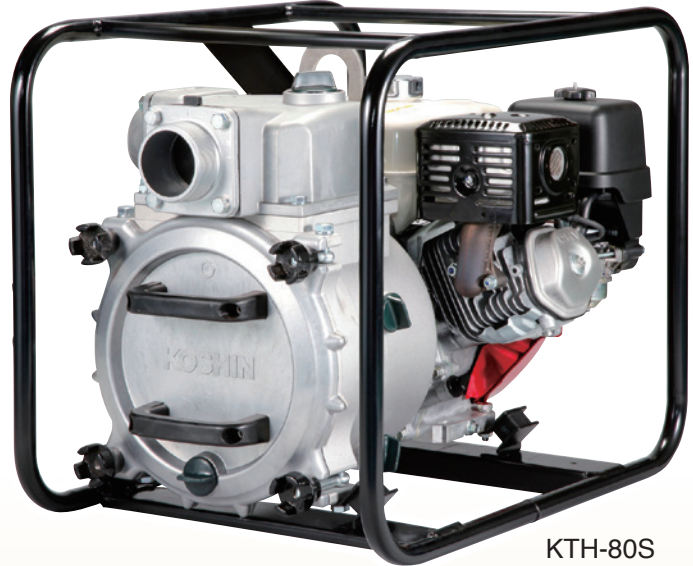
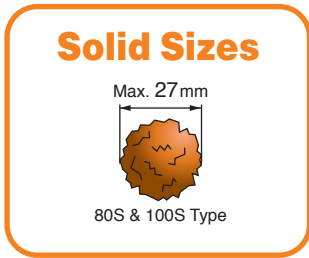
■ Specifications

Model	KTH-50X	KTH-80X	KTH-100X	
PUMP	Connection Dia	50 mm (2")	80 mm (3")	100 mm (4")
	Connection Thread		Outer Pipe Thread BSP	
	Total Head	30 m (98 ft)	27 m (89 ft)	26 m (85 ft)
	Delivery Volume	700 L/min (185 USG/min)	1340 L/min (354 USG/min)	1650 L/min (435 USG/min)
	Max. Suction Lift		8 m (26 ft)	
	Material for Mechanical Seal		SiC (Silicon Carbide) x SiC	
	Material for Impeller		Hi-Chrome	
Material for Volute		Spheroidal Graphite Iron Castings		
Type		Forced Air-cooled 4-stroke Gasoline Engine		
ENGINE	Model	Honda GX160	Honda GX240	Honda GX340
	Exhaust Volume	163 cc	270 cc	389 cc
	Rated Output	2.9 kW (3.9 PS) / 3600 rpm	4.6 kW (6.2 PS) / 3600 rpm	6.3 kW (8.6 PS) / 3600 rpm
	Max. Output	3.6 kW (4.9 PS) / 3600 rpm	5.9 kW (7.9 PS) / 3600 rpm	8.0 kW (10.9 PS) / 3600 rpm
	Fuel		Automotive Unleaded Gasoline	
	Fuel Tank Capacity	3.1 L (0.82 USG)	5.3 L (1.40 USG)	6.1 L (1.61 USG)
	Continuous Operating Time	Approx. 2.2 hrs	Approx. 2.5 hrs	Approx. 2 hrs
	Starting Method		Recoil Starter	
Standard Accessories	1 Strainer, 2 Hose Couplings, 3 Hose Bands, 1 Engine Tool Set			
Net Weight	47 kg (104 lbs)	59 kg (130 lbs)	78 kg (172 lbs)	
Gross Weight	51 kg (112 lbs)	64 kg (141 lbs)	85 kg (187 lbs)	
Dimensions LxWxH (mm)	646 x 488 x 509	711 x 506 x 570	780 x 570 x 652	
Packing Unit		1		

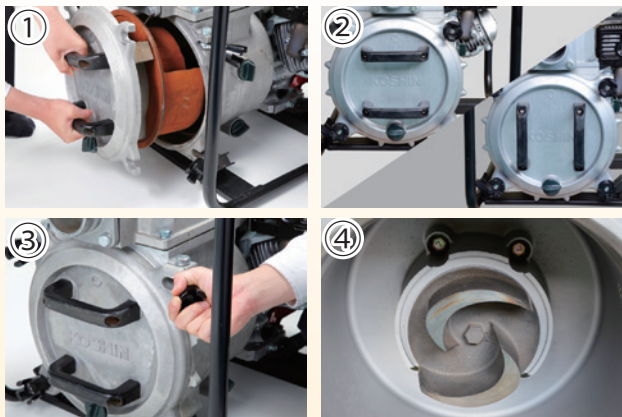
New Design with Easy Maintenance

• Powered by Honda GX270 & GX390 with low oil alert

- ① The cleanout cover can be removed easily without removing hoses
- ② Handles on the cleanout cover can be installed in vertical or horizontal position
- ③ Easy removal of knobs
- ④ New Impeller design with hexagon boss for easy installation and removal

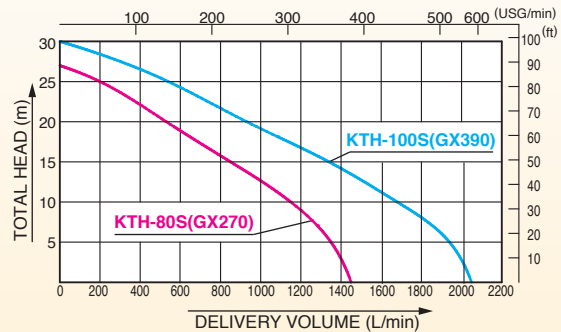


KTH-80S



■ Performance Curve

*Performance ratings are guaranteed minimum, not inflated maximum.



■ Specifications

	Model	KTH-80S	KTH-100S
PUMP	Connection Dia	80 mm (3")	100 mm (4")
	Connection Thread	Parallel Pipe Thread or NPT	
	Total Head	27 m (89 ft)	30 m (98 ft)
	Delivery Volume	1450 L/min (383 USG/min)	2050 L/min (542 USG/min)
	Max. Suction Lift	8 m (26 ft)	
	Material for Mechanical Seal	SiC (Silicon Carbide) × SiC	
	Material for Impeller	Hi-Chrome	
	Material for Volute	FCD	
ENGINE	Type	Forced Air-Cooled 4-stroke OHV Gasoline Engine	
	Model	Honda GX270	Honda GX390
	Exhaust Volume	270 cc	389 cc
	Rated Output	5.1 kW (6.9 PS) / 3600 rpm	7.0 kW (9.5 PS) / 3600 rpm
	Max. Output	6.3 kW (8.6 PS) / 3600 rpm	8.7 kW (11.8 PS) / 3600 rpm
	Fuel	Automotive Unleaded Gasoline	
	Fuel Tank Capacity	5.3 L (1.40 USG)	6.1 L (1.61 USG)
	Continuous Operating Time	Approx. 2 hrs	
	Starting Method	Recoil Starter	
	Accessories	1 Strainer, 2 Hose Couplings, 3 Hose Bands, 1 Engine Tool Set	
Net Weight	76 kg (146 lbs)	86.5 kg (181 lbs)	
Gross Weight	66 kg (146 lbs)	82 kg (181 lbs)	
Dimensions L×W×H (mm)	730 × 530 × 600	785 × 565 × 630	
Packing Unit	1		